

coniche

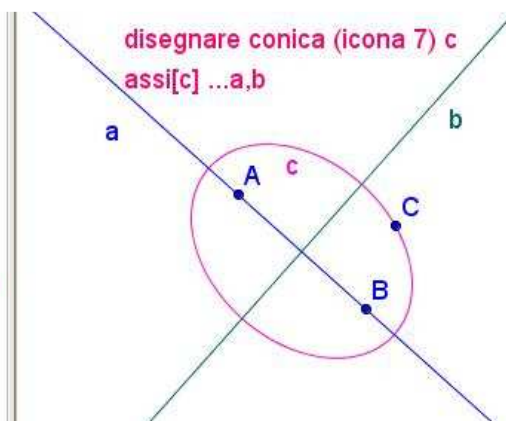
asintoto-assemaggiore-aseminore-assi

Oggetti liberi

- A = (1.08, 3.8)
- B = (2.8, 2.26)
- C = (3.2, 3.38)

Oggetti dipendenti

- a: $0.67x + 0.75y = 3.55$
- b: $-0.75x + 0.67y = 0.58$
- c: $33.07x^2 + 21.19xy + 35.42y^2 - 192.52x -$

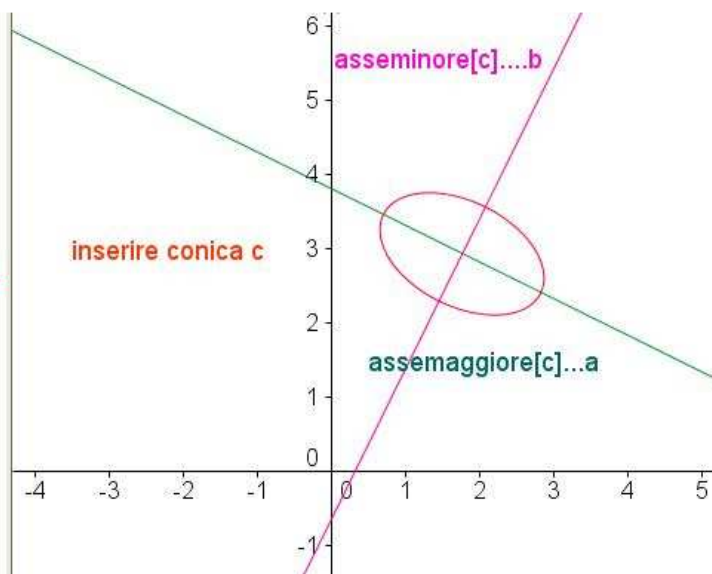


Oggetti liberi

- A = (0.92, 3.34)
- B = (2.62, 2.5)
- C = (2.64, 3.14)

Oggetti dipendenti

- a: $0.44x + 0.9y = 3.4$
- b: $-0.9x + 0.44y = -0.29$
- c: $10.94x^2 + 11.42xy +$



| | | |
|----------------|---------------------------------------|--|
| 3 Punto C | | C = (2.64, 3.14) |
| 4 Ellisse c | Ellisse di fuochi A, B passante per C | $c: 10.94x^2 + 11.42xy + 19.68y^2 - 72.1x - 135.16y = -249.72$ |
| 5 Retta a | Asse maggiore di c | $a: 0.44x + 0.9y = 3.4$ |
| 6 Testo testo1 | | "inserire conica c" |
| 7 Testo testo2 | | "assemaggiore[c]...a" |
| 8 Retta b | Asse minore di c | $b: -0.9x + 0.44y = -0.29$ |
| 9 Testo testo3 | | "aseminore[c]...b" |

Oggetti liberi

● **A = (1.06, 2.82)**

● **B = (2.66, 1.48)**

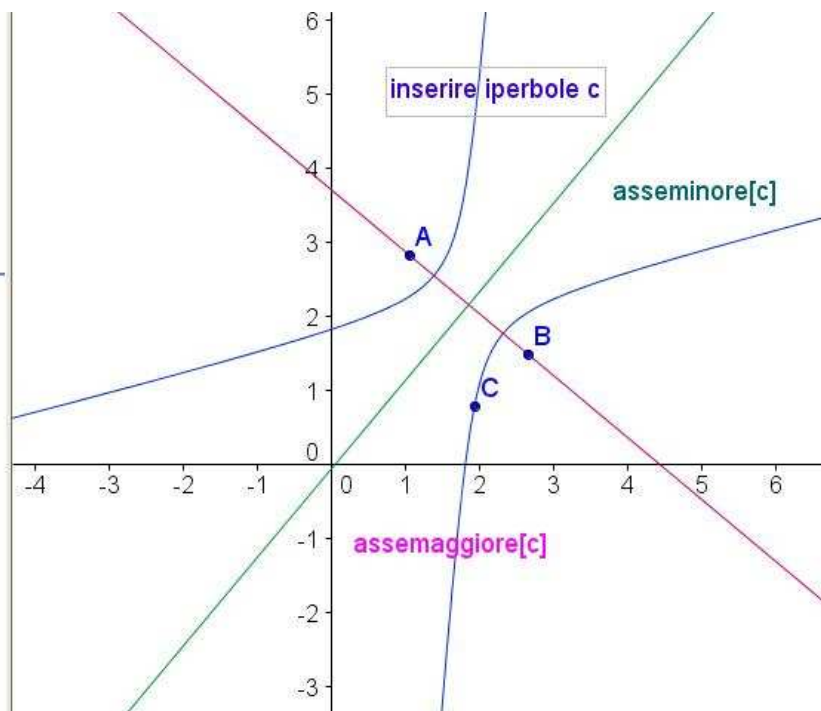
● **C = (1.94, 0.78)**

Oggetti dipendenti

● **a: $-0.64x - 0.77y = -2.84$**

● **b: $0.77x - 0.64y = 0.05$**

● **c: $-4.31x^2 + 17.15xy$**



Oggetti liberi

● **A = (1.94, 3.32)**

● **C = (-1.28, 4.68)**

● **D = (2.9, 0.74)**

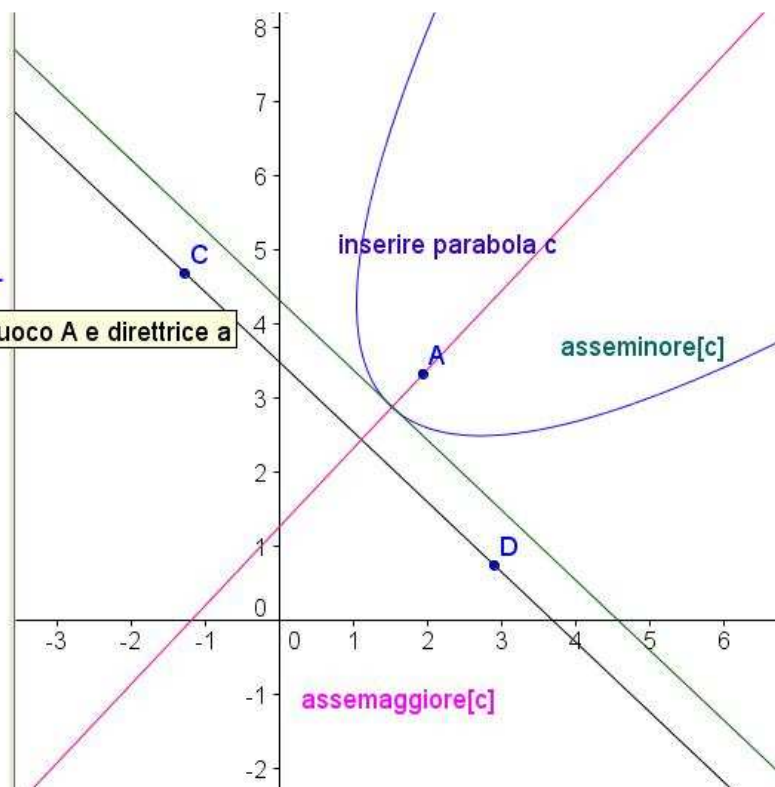
Oggetti dipendenti

● **a: $3.94x + 4.18y = 14.52$**

● **b: $-0.73x + 0.69y = 0.87$**

● **c: $17.47x^2 - 32.94xy +$**

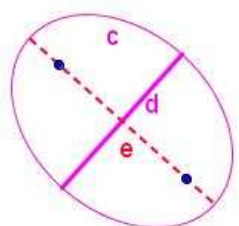
Parabola c: Parabola con fuoco A e direttrice a



Muovi: Trascinare o selezionare

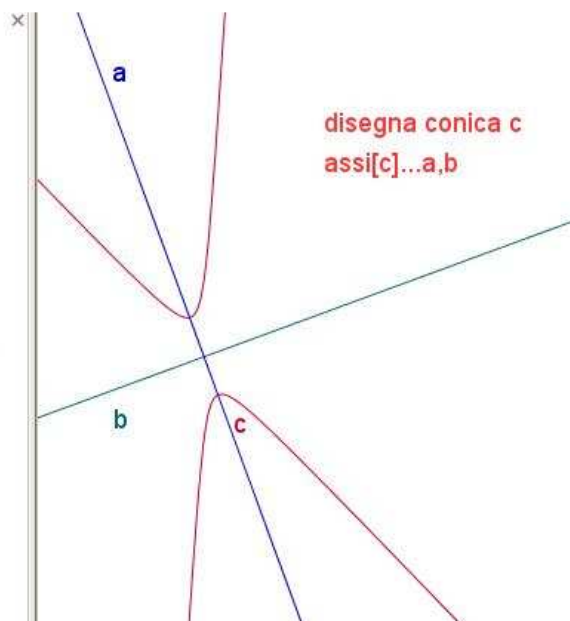
- Oggetti liberi
 - A = (1.08, 3.8)
 - B = (2.8, 2.26)
 - C = (3.2, 3.38)
- Oggetti dipendenti
 - D = (1.13, 2.13)
 - E = (2.75, 3.93)
 - F = (0.69, 4.15)
 - G = (3.19, 1.91)
 - a: $0.67x + 0.75y = 3.55$
 - b: $-0.75x + 0.67y = 0.58$
 - c: $33.07x^2 + 21.19xy + 35.42y^2 - 192.52x -$
 - d = 2.43
 - e = 3.35

disegnare conica (icona 7) c
assi[c] ...a,b

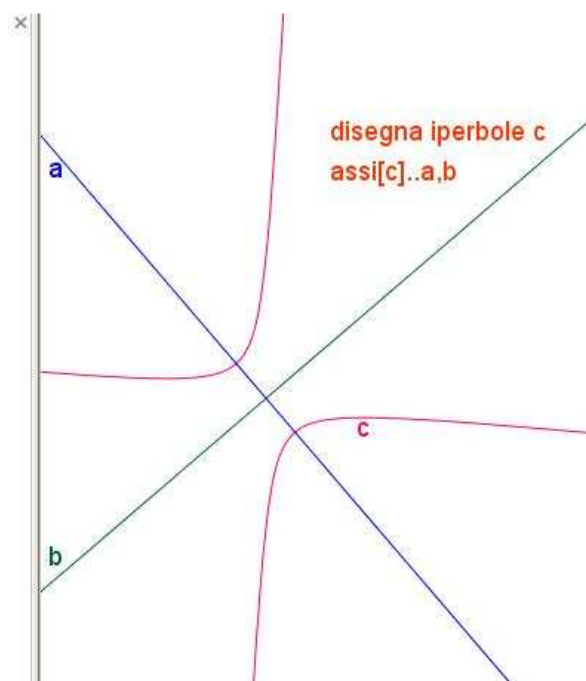


disegna segmenti per assi d, e
nascondi costruzione

- Oggetti liberi
 - A = (-2, 3.14)
 - B = (-2.48, 2.22)
 - C = (-1.8, 1.1)
 - D = (-0.78, 0.24)
 - E = (0.26, -0.82)
- Oggetti dipendenti
 - a: $0.94x + 0.34y = -1.37$
 - b: $-0.34x + 0.94y = 2.22$
 - c: $3.78x^2 + 3.39xy - 0.23y^2 + 10.02x + 7.68y = -4.32$



- Oggetti liberi
 - A = (-1.82, 1.72)
 - B = (-0.72, 0.44)
 - C = (-1.26, -0.66)
- Oggetti dipendenti
 - a: $0.76x + 0.65y = -0.26$
 - b: $-0.65x + 0.76y = 1.65$
 - c: $1.11x^2 + 11.26xy - 0.6y^2 - 9.35x + 15.61y = 12.34$



- 📁 Oggetti liberi
 - $A = (1, 1)$
 - $B = (2, 1)$
 - $C = (3, 2)$
- 📁 Oggetti dipendenti
 - $a: y = 1$
 - $b: x = 3$
 - $c: x^2 - 6x - 2y = -12$
 - $d: y = 1.5$

